

AEROSPACE EDDY CURRENT FLAW DETECTORS

AEROCHECK2

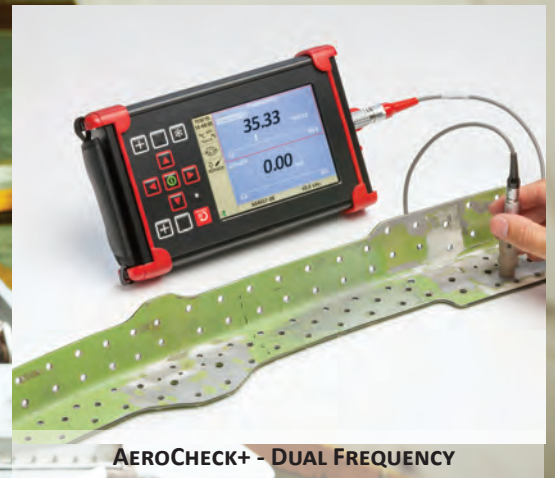
SINGLE FREQUENCY

AEROCHECK+

DUAL FREQUENCY



AEROCHECK2 - SINGLE FREQUENCY



AEROCHECK+ - DUAL FREQUENCY

- Advanced features including Conductivity & Auto-mix, Loop, Guides and Trace
- Large, crisp, daylight readable display
- User friendly interface and ergonomic lightweight design
- Rotary capabilities as standard
- Industry standard probe connectors
- Eight hour battery life
- Rapid 2.5 Hour charging time
- Two-year warranty

“ **The AEROCHECK Flaw Detector offers the very best in Eddy Current performance with rotary inspection capabilities as standard.** ”

INDUSTRY STANDARD PROBE CONNECTORS

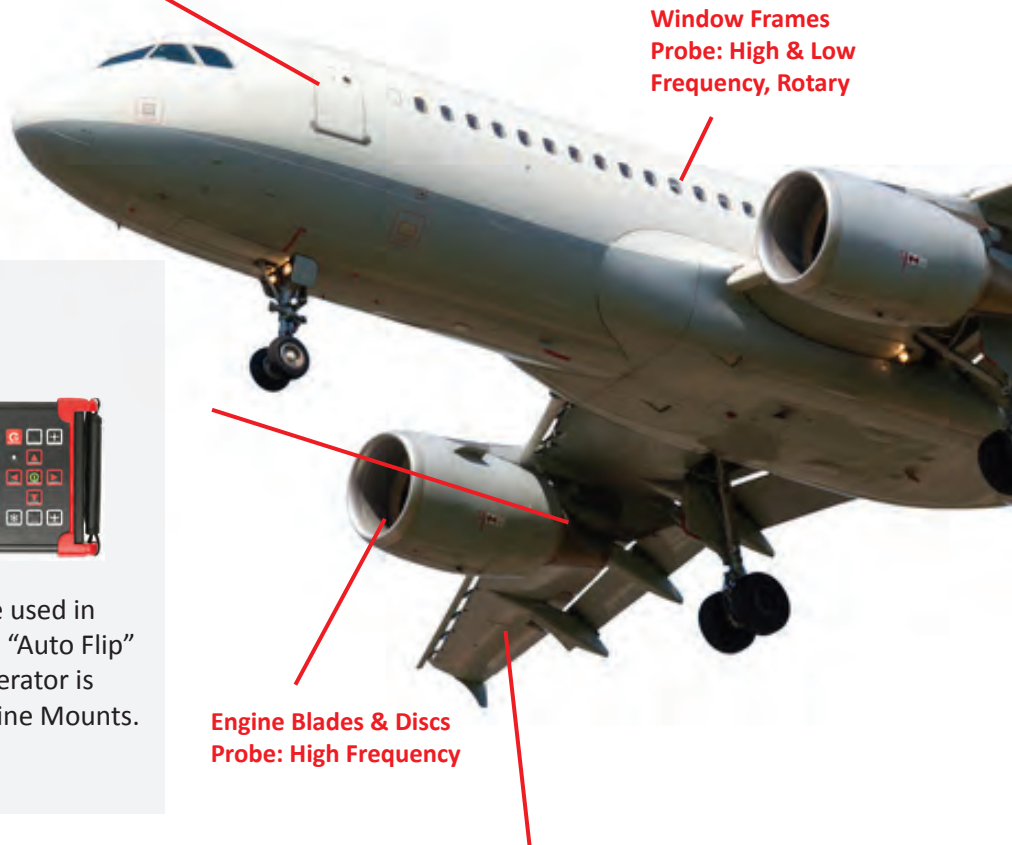
The AEROCHECK series uses a wide range of eddy current probes meeting all the needs of the aerospace eddy current inspector. Absolute, Bridge and Reflection connected probes can use the industry standard 12 Way LEMO Connector. A LEMO 00 Connector is also provided for simpler connection of Absolute probes.



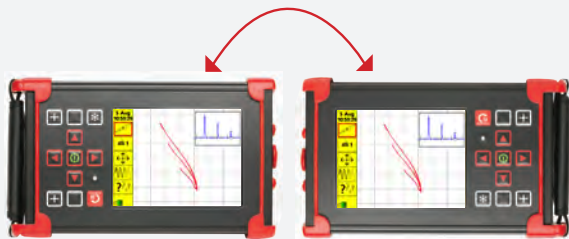
WIDE FREQUENCY RANGE

The single frequency AEROCHECK2 has a frequency range of 10Hz to 20MHz, whereas the dual frequency AEROCHECK+ offers 10Hz -12.8MHz, ensuring a diverse range of real world applications can be met.

Area of Inspection: Fasteners
Probe: Low Frequency, Slider



WORKS THE WAY YOU DO!



The AEROCHECK series has the ability to be used in left and right-handed mode; thanks to the “Auto Flip” function. This is especially useful if the operator is inspecting in a restricted area like the Engine Mounts.

Area of Inspection: Engine Mounts
Probe: Surface

Area of Inspection: Wing Surface & Hinges
Probe: High & Low Frequency

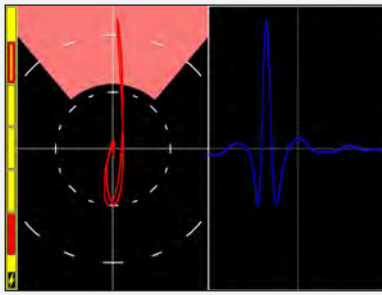
LIGHTWEIGHT, RUGGED, “SURE GRIP” & ENHANCED PROTECTION

Weighing just 1.2kg (2.7lbs), housed in a tough aluminium alloy Mg Si 0.5 powder-coated outer case and fitted with rubber feet to aid grip, the AEROCHECK is as stable on a wing of an aircraft as it is on a laboratory bench.

Both Instruments have two integrated moulded “Sure Grip” handles on the rear of the case.

The AEROCHECK series has enhanced durability through a fully-fitted, custom-designed outer “protective boot” and integral hand-strap for even greater strength and easier grip in use.





ROTARY CAPABILITIES AS STANDARD

The AEROCHECK series includes rotary capabilities as standard and can be used with the ETHER Mercury (mini) ARD002, Hocking 33A100 or the Rohmann MR3/SR1 and SR2 Drives (with special adapter cable).

Area of Inspection: Door Access Points & Window Frames

Probe: Rotary

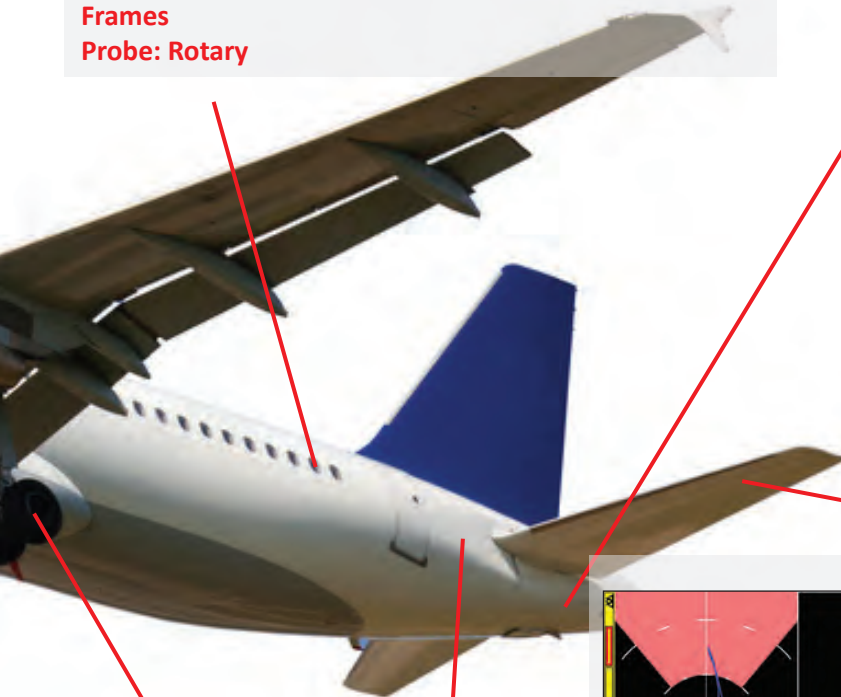
DAYLIGHT READABLE, CLEAR, LARGE, CONFIGURABLE COLOUR SCREEN

The AEROCHECK series has a large 14.5cm (5.7 Inches) LCD Colour Screen of 640 x 480 pixels providing the Operator with excellent signal resolution and presentation and with the choice of configuring their own colour schemes and display types. It is easy to optimise the screen presentation regardless of the light conditions and it is possible to view a choice of up to two Spot, Time-Base, Waterfall or Meter display types.

Not all NDT inspection on aircraft takes place in the comfort of an aircraft hangar so the daylight readable display is easily viewable outdoors.

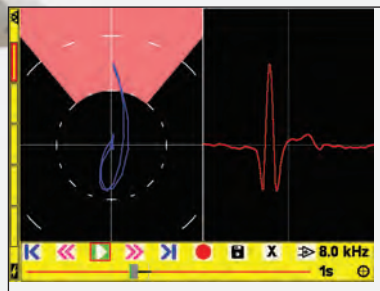
Area of Inspection: Bulkhead

Probe: Low Frequency



Area of Inspection: Horizontal Stabilisers
Probe: High & Low Frequency

Wheels, Wheel Brakes, Landing Gear
Probe: High Frequency, Rotary



RECORD AND REPLAY

Up to 164 seconds of live data may be recorded in real-time and then played back either on the instrument or on a PC using the desktop application ETHERANALYSER for subsequent analysis and review. The recorded data may be further optimised by adjusting many settings including Phase, Gain, Filters, Display and Spot position.

Area of Inspection: Fuselage
Probe: Surface & Sub-Surface

EASY TO USE MENU & ICON SYSTEM

The AEROCHECK series menu system is simple and fast to navigate with the ability to add individually selectable soft key menu items to the sidebar as recognisable icons for rapid function access and a "quick-setting menu" for easy set-up, review and adjustment.

With four operator-selectable soft keys and a fifth slot for the last menu function used, Technicians can quickly modify the system with their preferences. Each saved instrument setting can be associated with a unique, single press set of quick access soft keys. There are also two front panel hard keys that can be readily programmed for rapid single press access to frequently used functions.

9/6/14 13:47:03	Eddy current PROBS Gain 1 Filters Rotary Summary	Configure Appearance Power save Time & Date Language Load & Save About..
dB 1	Display Graticule Spot Offset Persistence Panels	Advanced Alarm Alarm Zone Attachments Guides Record & Replay Auto Phase

“ The AEROCHECK offers the right mix for features for any Eddy Current application need in an easy-to-use package designed entirely with the end user in mind. ”

ALL POSSIBLE APPLICATIONS COVERED!

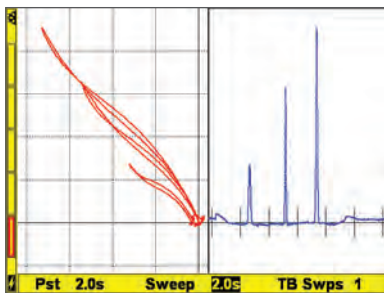
The AEROCHECK2 and AEROCHECK+ offer maximum flexibility when deciding which features are needed for your application. As well as the hand-held WELDCHECK & AEROCHECK series, the range also includes the VICTOR 2.2D for inline component testing solutions.

KEY DIFFERENCES

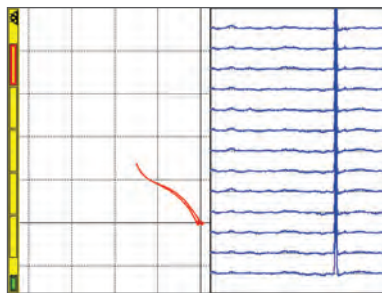
EQUIPMENT	FEATURES								
	ROTARY	DATA RECORDING	DUAL FREQUENCY WITH AUTO-MIX	CONDUCTIVITY	GUIDES	LOOP	TRACE	ENHANCED PROTECTION	FREQUENCY
AEROCHECK2	●	●			●	●	●	●	10Hz-20MHz
AEROCHECK+	●	●	●	●	●	●	●	●	10Hz-12.8MHz

● = As Standard

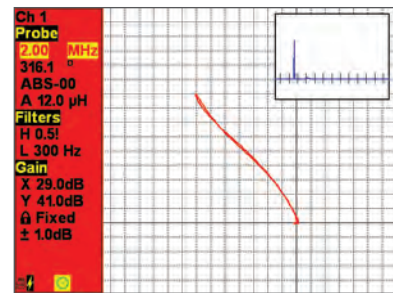
EXCEPTIONAL SCREEN CLARITY FOR ANY APPLICATION



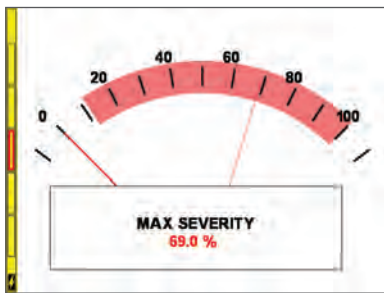
50/50 XY & Timebase



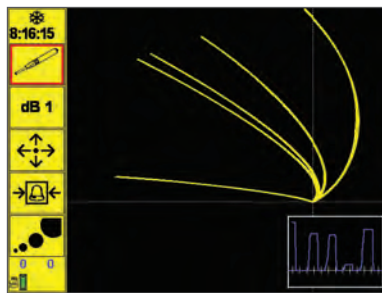
50/50 XY Waterfall with 12 2s time sweeps



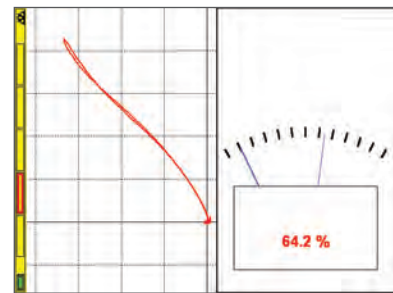
XY with small timebase and Quick Menu



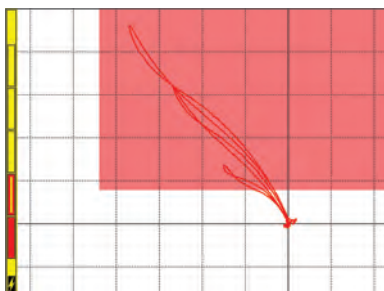
Meter Full Screen



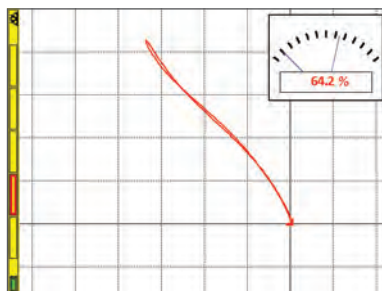
Dark background polar graticule and soft-keys



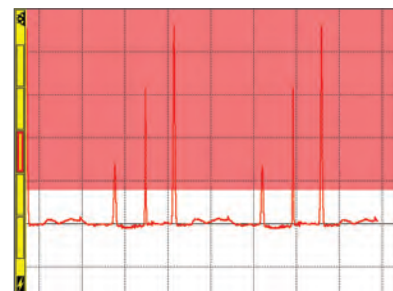
XY and Meter 50/50



XY Full screen with Box Alarm



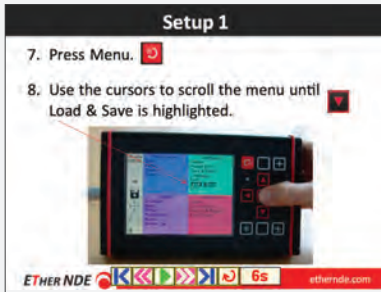
XY with Small Meter



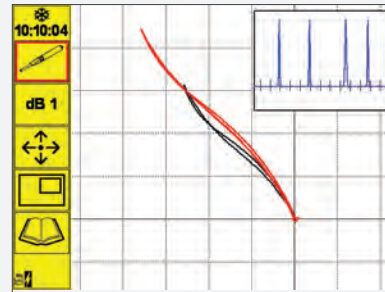
Timebase Full Screen with level arm

The AEROCHECK+ offers all the great features of the AEROCHECK2 and in addition Dual Frequency and Conductivity Measurement.

ADVANCED FEATURES



GUIDES FEATURE: “Guides” allows the user to display a slide show that can be created easily with commonly used desktop software. Instructions, tutorials and procedures for an inspection can be added to the AEROCHECK+ very quickly and the NDT inspector can easily switch between the inspection itself and the “Guides” while performing a live test.



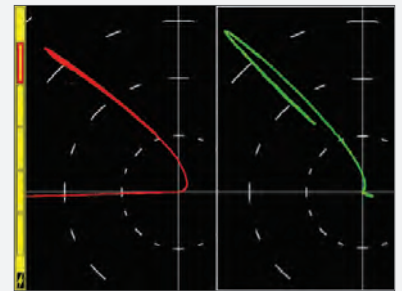
TRACE FEATURE: The trace function allows a reference trace to be stored on the screen and appears along with the graticule behind the live spot. This allows the operator to readily compare the live data with the reference calibration.

“LOOP” FEATURE: “Loop” is a convenient way of capturing a short live repetitive signal and then optimising the instrument settings through real time adjustments of the Phase, Gain, Balance, Filters and Display Configuration in order to simplify the task of optimising the parameters.

The “Loop” function is excellent for calibration set up especially for setting the filters for Rotary and Dual Frequency mix.

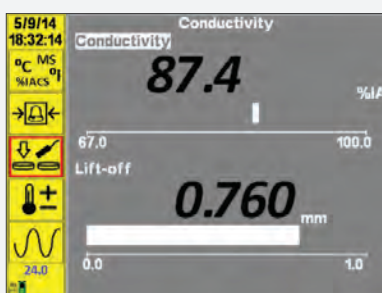
ADDITIONAL FEATURES AVAILABLE ON THE AEROCHECK+

DUAL FREQUENCY FEATURE: At different frequencies, different signal indications (e.g. lift off and defect) have a different relative phase and amplitude response. By means of Phase Rotation and Gain change of the X Y signal components one of these indications can be manipulated to be almost identical in phase and amplitude as the other and then by subtraction (mixing), the unwanted component is minimised, giving an improved detection of the required signal.



AUTO-MIX FEATURE: A dual frequency mix exploits the phase and sensitivity change between two different types of indication to suppress one and enhance the other.

Auto-mix simplifies the sometimes complex procedure of mixing two different frequency signals and can be achieved on the AEROCHECK+ through a series of easy steps. Once set up, the Auto-mix itself is as simple as pressing one key.



CONDUCTIVITY MEASUREMENT: Many of the Aerospace procedures require that Conductivity Measurement is available on the designated Eddy Current Flaw Detector.

When connecting the Conductivity Probe, the AEROCHECK+ auto-detects the probe and seamlessly switches into conductivity mode. Removal of the probe switches the instrument back to flaw detection mode.

NB: The Conductivity Measurement Option is available through the purchase of the KACON001 KIT.

Both the AEROCHECK2 and AEROCHECK+ are supplied with a standard “Two-Year Manufacturer Warranty”.

This covers all components of the Instruments and only excludes customer damage or misuse.

The “Two-Year Warranty” can be extended to “Five Years” through purchase of “ETHERCover” Extended Warranty Protection.

SPECIFICATIONS

		AEROCHECK2	AEROCHECK+
Probe	Connectors	12 Way Lemo 2b (Absolute, Bridge and Reflection) and Connection Lemo 00 (for single element absolute probes).	Simultaneous probe operation possible using Lemo 12 way and Lemo 00.
	Rotary	600-3000 rpm - ETher Mercury Drive (ADR002), Hocking 33A100, Rohmann MR3, SR1 and SR2 Drive (special adapter needed)	
Frequency		Single Freq. = 10Hz – 20MHz with range variable resolution.	Dual Freq. = 10Hz - 12.8MHz & Mix -18 to +18dB on output
Gain	Overall Input Drive Max X/Y Ratio	-18 to + 104dB, 0.1, 1 and 6dB steps (104dB maximum) 0dB or 12dB 0dB, 6dB and 10dB (0dB reference 1mW into 50 ohm). +/-100.0 dB	
Phase	Range Auto Phase	0.0-359.9°, 0.1° steps Allows phase angle to be automatically set to a pre set angle	
Filters	Normal High Pass Normal Low Pass	DC to 2kHz or Low Pass Filter, which ever is the lower in 1 Hz steps. Plus variable adaptive balance drift compensation 0.01 - 0.5 Hz (6 steps). 1Hz to 2kHz or a quarter of the lowest test frequency, which ever is lower in 1 Hz steps.	
Balance	Manual Automatic	14 internal balance loads; 2.2µH, 5.0µH, 6.0µH, 6.5µH, 7.0µH, 7.5µH, 8.2µH, 12µH, 15µH, 18µH, 22µH, 30µH, 47µH, 82µH Optimised balance load selection.	
Alarms	Box Sector Output	Fully configurable, Freeze, Tone or Visual. Fully configurable, Freeze, Tone or Visual. Open collector transistor (32v dc at 10mA max) available on 12 way lemo.	
Display	Type Viewable Area Resolution Flip Colour Schemes Configurable Screen Display Modes Graticules Offset Digital Spot Position Readout Summary	5.7" (145mm), 18 bit Colour, daylight readable. 115.2mm (Horizontal) x 86.4mm (Vertical) 640 x 480 pixels Manual or automatic screen orientation change to enable left or right handed use. User configurable Dark, Bright and Black & White Full Screen, Single, Dual Spot or Dual Pane with variable size and location and function e.g. XY, Timebase, Waterfall and Meter. Spot, Time base (0.1-20 seconds x 1-200 sweeps and up to 55 seconds), Waterfall and Meter with peak hold and % readout. None, Grid (4 sizes 5, 10, 15 and 20% FSH), Polar (4 sizes 5, 10, 15 and 20% FSH) Spot Position: Y = -50 to +50, X = -65 to +65% Display in X,Y or R,θ Display of all settings in Legacy Format	
Removable Data Storage	Setup Storage Stored Screen Shots Record Replay	micro SD up to 32GB, holding over 10,000 settings micro SD up to 32GB, holding over 10,000 screen shots Comprehensive Record Replay and Storage Real-time recording of trace data and Replay on instruments and desktop PC up to 164 seconds	
Outputs	PC Connectivity Digital Volt Free Alarm VGA	USB (Full PC remote control plus Real Time data) On Lemo 12 way Open collector transistor (36v dc at 10mA max). Full 15 way VGA output	
Languages		English, French, Spanish, Italian, Portuguese, Russian, Japanese, Chinese, Turkish, Czech, Norwegian	
Verification Level		The system includes on delivery a 2 year validity Verification Level 2 detailed functional check and calibration as per ISO 15548-1:2013	
Power On Self Test		The system performs a self test on start up of external ram, sd ram, accelerometer, Micro SD card, LCD screen buffer.	
Power	External Battery Running Time Charging Time	100-240 v 50-60Hz 30 Watts Internal 7.2V nominal @ 3100mAh = 22.32 watt.hr Up to 8 hours with a 2MHz Pencil Probe 30% Back Light and up to 6 hours with a Rotary Drive at 3000rpm 50% duty cycle. 2.5 hrs. charge time, Simultaneous charge and operation.	
Physical	Weight Size (w x h x d) Material Operating Temp Storage Temp IP Rating	1.2 kg, 2.7 lbs. 237.5mm x 144mm x 52mm / 9.4" x 5.7" x 2.1" Aluminium alloy Mg Si 0.5 powder-coated -20 to +60 °C Storage for up to 12 months -20 to +35 °C Nominal +20 °C 54	

ADVANCED FEATURES

Advanced Features	Guides	Create and display a slide show containing instructions, tutorials and procedures using Microsoft PowerPoint.
	Attachments	Screenshots and Data Recordings are saved in a folder with the name of the Settings.
	Loop	Capture a live repetitive signal and then optimise the instrument settings (Phase, Gain, Filters) to simplify optimising the parameters
	Trace	Allows a calibration reference signal to be stored on the screen and then compared with the live signal
	Data Output	Real-time post processed over USB at 8kHz overall for all 3 data pairs (X, Y and Mix) with DLL for embedding functionality into software.

CONDUCTIVITY SPECIFICATION (AEROCHECK+ ONLY)

Frequency	One frequency only 60kHz standard (choice of 120, 240 and 480kHz)
Accuracy	0.5%-10% IACS better than +/-0.05% IACS 10%-25% IACS better than +/-0.25% IACS 25%-60% IACS better than +/-0.5% IACS 60%-110% IACS better than +/-1% IACS Lift Off corrected to 1.0mm No temperature compensation All Errors at 90% Confidence Level
Resolution	3 decimal points max Auto Resolution Mode AutoS = Legacy Instrument, Auto = SigmaCheck

EQUIPMENT KITS

STANDARD AEROCHECK SERIES KITS

IAER003 Instrument, AeroCheck2, Single Frequency (20Hz-20MHz), Hand Held Portable Flaw Detector, Software + Manual on USB Stick
IAER002 Instrument, AeroCheck+, Dual Frequency (10Hz-12.8MHz) Hand Held, Portable Flaw Detector, Software + Manual on USB Stick, with Rotary & Conductivity at 60kHz Functionality
AWEL002 AeroCheck Power Adapter + Input Plugs (UK, EU, US & Australia)
AWEL003 Adjustable Shoulder Strap, Padded with Quick-Release
AC006 Instrument Soft Carry Case
A090 USB Cable, A to MIN B
40463 Quick Reference Card
ALLCX-M02-015A Lead, Lemo 00 to Microdot, 1.5m (Absolute)
ALL12-L04-015R Lead, Lemo 12-Way - Lemo 4-Way (Reflection)

OPTIONAL ACCESSORIES

AAER002 Hard Transit Case
AAER004 Protective Splash Proof Cover (WeldCheck2, WeldCheck+, AeroCheck2, AeroCheck+)
AWEL006 External, 8 x AA Battery Holder with On/Off Switch
AWEL008 In car Power Adapter
ALL12-L04-015R Lead, Lemo 12-Way - Lemo 4-Way, 1.5m (Reflection)
ALL12-L04-015B Lead, Lemo 12-Way - Lemo 4-Way, 1.5m (Bridge)
ALLCX-M02-015A Lead, Lemo 00 to Microdot, 1.5m (Absolute)
ALLCX-B02-015A Lead, Lemo 00 to BNC, 1.5m (Absolute)
ARD002 Mercury (mini) Rotary Drive
ALL12-L12-020M Lead to connect Mercury (mini - ARD002) Rotary Drive, Lemo 12-Way, 2m
ALL12-F08-020ETH Adapter, lead to connect Rohmann Rotary Drive MR3, SR1 and SR2, Lemo 12-Way, 2m.
40470 Tripod Bracket To fit 1/4" Camera Tripod Mount with Male Screw

PROBE KITS

KASUR001 KIT Surface Inspection (4 probes, lead and Al and Fe Test Block)
KASUBS001 KIT Sub Surface Inspection, Low Frequency (2 probes, lead and test piece)
KAROT001 KIT Mercury Rotary Drive and Cable Only
KACON001 KIT Conductivity Kit (Probe, Calibration and Cable) - (AEROCHECK+ only)

